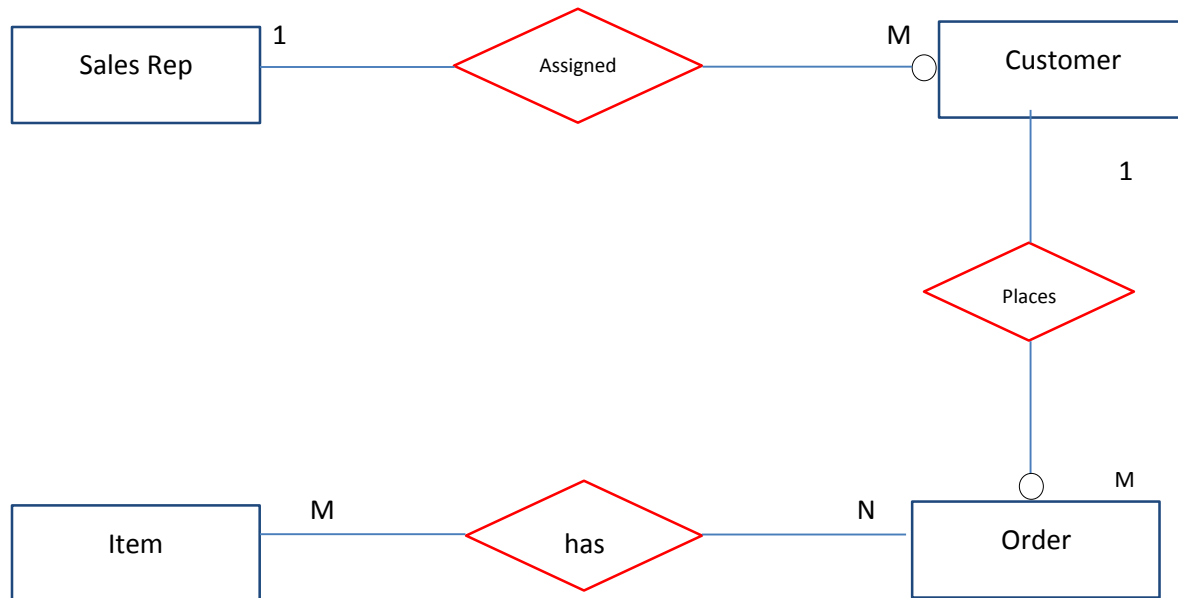


ERD Assignment 3



After you have read Chapter 4 use the above figure to complete the ERD Homework 2 assignment.

Answer these questions:

- Write the business rules that are reflected by this ERD.
- Identify all the cardinalities.
- Explain how you would modify the design to remove the M:N relationship between Order and Item.

Redraw the ERD you see in the figure using Powerpoint, Visio or Word, which will allow you to draw graphics. The ERD should fit onto 1 page. You will only need to turn in the final product which will be the overall ERD from the figure with

- Business Rules listed on it somewhere (below the figure will be fine)
- The cardinalities listed for each entity
- Relationship, and the expanded M:N relationship redrawn to eliminate the M:N as shown above.

When you've completed your ERD, save it as a file called ERD2_YourInitialsHere.doc or ppt. Send it through the dropbox. Add any comments you'd like to the message.